



# Company Overview

**Lighthouse Engineering Pty Ltd** designs, shapes, refines and installs steel components for buildings across Western Australia and beyond.

For over a decade, we have been providing cost effective and reliable metalwork, including both structural and architectural steel, for a wide variety of construction projects.

No matter the size of the project, we are there from the beginning with our state-of-the-art engineering and fabrication operations.

When the time comes, we'll install our quality steel on time and on budget. Lighthouse Engineering is your trusted name in the structural steel industry.

## Company Details



48A Luisini Road,  
Wangara, WA 6065 Australia



info@lighthouseengineering.com.au



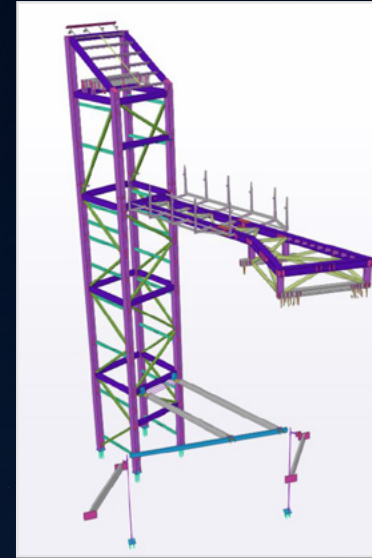
08 6180 9260



lighthouseengineering.com.au



59 156 142 979



Art Gallery WA

While you're standing beneath our steel framing,  
know that we're there too... standing behind our work!

# Our Purpose

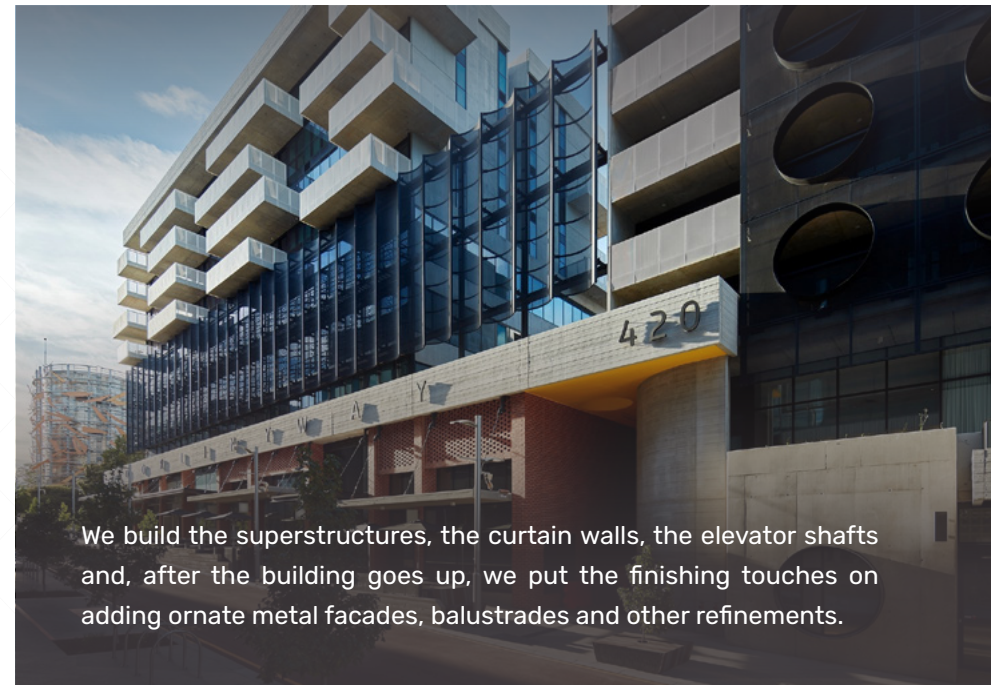
Steel is the structural backbone holding the 'built world' together, upright and secure. Get this wrong and nothing else matters.

At Lighthouse Engineering, our purpose is to provide clients with state-of-the-art design and manufacturing solutions for all their steel fabrication needs.

Our engineers and creatives have decades of experience modelling, fabricating, and erecting steel superstructures and producing appealing architectural steel.

Our catalogue of projects includes industrial structures, airport terminals, schools and university buildings, train stations and rail projects, hospitals, residential towers and hotels, bridges and other unique modulares.

Curtin University - Exchange Building



FMG HME Workshop



Murdoch Health & Knowledge Precinct



Curtin University - T.L. Robertson Library

# Our Services

At Lighthouse Engineering, we start with the raw materials by cutting, drilling, trimming and refining the structural steel to your exact design.

Our metal work can be used to erect the structure, raise the roof and hold the curtain walls in place. But we know, long before the foundation is poured, the intricate details of your build must be mapped out precisely.

We'll work with you to draft plans that fit your vision and then we'll begin a manufacturing process designed to yield the steelwork necessary to bring your plans to life. Finally, our construction team will help you put all the pieces together.

**Lighthouse Engineering prides itself on the quality of its steel structures, knowing every project we do will stand the test of time!**

**Voortman Steel Group** is partnering with us because we have the latest technology in CNC steel processing.

When compared to older plasma or drilling ONLY technologies, the latest in fully automated high-speed milling offers higher cost/time efficiency, better consistent tolerances, more job flexibility, and a far better machining finishing quality. Enabling scribing in shop drawings, will increase fit-up accuracy at the shop.

We also have separate steel saw and drill line that can drill various RAIL sections (Light rail 22 & 30 kg/m, Standard Rail 41 - 68kg/m, and crane rails 75 & 86 kg/m).



"The combination of both full systems into a single integrated line with fully automated file and material handling has proven to be a real game changer!"



## Engineering and Consultancy

Our expert team will collaborate with you through every step of the project. We offer a broad spectrum of engineering services, including design coordination, project management, 3D modelling and support. We also offer value engineering, meaning we will work to get the lowest cost without sacrificing the integrity of our structural steel.



## CNC Steel Processing

For support, we will process structural and tubular steel sections and the plates, saving you time and the hassle of conventionally processing steel. Our facilities also have CNC rail-sawing and drilling capabilities, meaning our production is efficient and accurate.



## Fabrication, Welding, and Surface Treatment

We will 3D model, detail and manufacture structural steel, metalwork, and platework products that will fit within your project and specifications. We also create modular metalworks solutions to provide easy construction, saving time and money on the project.



## Steelworks Installation On Site

When it comes to use steelworks on site, we will unload the product as it arrives and assist with the installation. Our team will also complete any welding work that is required and assist with connecting the modular systems.

# Industries We Serve

Because steel is such an important component for every construction project, our client base is diverse.

Our past projects have included airports, train terminals, medical centres, university buildings and large-scale residential and commercial real estate.



Perth International Airport - Departures Expansion and Virgin Terminal



Guildford Grammar School - New Boarding House



Defence



Resources



Infrastructure



Commercial Projects



Marine



Education



Healthcare



Hospitality

# Accreditation and People

Given the highly regulated Australian construction environment, Lighthouse Engineering has a list of accreditations. Our diverse engineering team is also appropriately credentialed for a variety of projects, ensuring that our services are compliant with our clients' requirements.

We also believe that our qualified welders and fabricators are the best in the business and we have developed a comprehensive apprenticeship program, knowing that skills training is key to the future success of any business.



01. ISO 9001: Quality Management
02. SCA: Steelwork Compliance
03. Australian Steel Institute

We have designed our policies and OSHE procedures to comply with the legal and best industry practices.

# Our Clients

Over the years, Lighthouse Engineering has helped Tier 1 contractors with steelwork design, manufacturing and installation. Our work can be found in large and small projects across Western Australia and beyond.



# Testimonials

*"Lighthouse Engineering understood the demanding nature of the lead architect on this project, and, as proof, the quality and workmanship of the architecturally finished structural steel is visible on site. It was a pleasure working with Lighthouse Engineering on this complex build and we look forward to doing so again in the future."*

**Yanny Douglas**

PROJECT MANAGER, ADCO

*"Lighthouse Engineering team provided professional project management, design coordination and detailing services. With high quality steelwork that exceeded Lendlease and the clients expectations. The quality documentation and reporting process was impressive, and we would be glad to work with Lighthouse Engineering again."*

**Jesse Kwong**

CONSTRUCTION MANAGER, LENDLEASE



Christchurch Grammar School - Perth WA

## Contact Us



48A Luisini Road,  
Wangara, WA 6065 Australia



[info@lighthouseengineering.com.au](mailto:info@lighthouseengineering.com.au)



[lighthouseengineering.com.au](http://lighthouseengineering.com.au)



08 6180 9260



59 156 142 979

